



LADY ON HER HIPPO. BRONZE, 24 X 38 X 13 CM.

MARIANNE ARNÄCK

PRESENTATION FOR AN ART COMMISSION



WISE ADVICE FROM A SIMPLE LADY. BRONZE, 140 X 120 X 90 CM.

MARIANNE ARNBÄCK

WISE ADVICE FROM A SIMPLE LADY

This sculpture was inaugurated in November 2011, commissioned by the Swedish municipality of Norrköping. It is installed in a park, Hagebyparken, and beside the sculpture a sign with the inscription: "An anteater-granny who, with her wisdom and life experience, gives advice and consolation to a human being".

The sculpture carries tenderness and warmth and is appreciated by grown-ups as well as by children, and by people from any cultural background. People seem to be touched by the closeness between the two figures and the expression of both humour and fairy tale. The sculpture is adapted to a bench, so people can lean on the anteater. Children like to sit in the anteater's or the woman's lap.

"Wise Advice from a Simple Lady" represents one of the motifs I often return to, a motif that for thousands of years has existed in nearly every culture, a motif where the animal symbolises and represents the human, the spiritual and the intellectual.



SEA GODDESS. ALUMINUM, 167 X 77 X 60 CM.

MARIANNE ARNBÄCK

SEA GODDESS

"Sea Goddess" would find its right place close to a harbour or out on a pier.

It can be ordered in any size and in any material.



LADY ON HER HIPPO. BRONZE, 24 X 38 X 13 CM.

MARIANNE ARNBÄCK

LADY ON HER HIPPO

"Lady on her Hippo" appeared to me during an indian ritual, a so-called drum journey where we, the participants, were supposed to meet our totem animal. Suddenly I found myself sitting on the back of a big female hippopotamus, the most lethal animal in Africa.

Some years later I transformed this experience into a sculpture. It has been exhibited in shows, achieving great appreciation – especially by women and children.

"Lady on her Hippo" come in three sizes, the biggest is 70x100x45 cm. Even bigger sizes can be ordered, in perfect use as a pew for grown-ups and a place to play for children.

The sculpture can be ordered in any size and in any material, preferably bronze.



GIRL ON HER RHINO. BRONZE, 24 X 39 X 13 CM.

MARIANNE ARNÄCK

GIRL ON HER RHINO

This sculpture is inspired by a dream that has stayed with me for many years. Now, the dream has materialized itself in this sculpture. Just like "Lady on her Hippo", it can be enjoyed both for pew and for play.

It can also be ordered in any size and in any material, preferably bronze.



RHINO. BRONZE, 20 X 38 X 13 CM.

MARIANNE ARNBÄCK

RHINO

"Rhino" is intended to stand turned towards and interacting with "Girl on her Rhino". Positioned like that they are observing each other with wonder and amazement. Of course, "Rhino" is also an aesthetic statement and expression in itself.

The sculpture can be ordered in any size and in any material, preferably bronze.



LOVING COUPLE. BRONZE, 19 X 34 X 36 CM.

MARIANNE ARNBÄCK

LOVING COUPLE

"Loving Couple", two panthers in a loving embrace in which the male playfully bites the female's neck. The female receives his courtship with pride and seeming disinterest.

The sculpture can be ordered in any size and in any material, preferably bronze.



MORRA AND I. TERRACOTTA, 27 X 13 X 17 CM.

MARIANNE ARNBÄCK

MORRA AND I

My idea with "Morra and I" is to place two or several sculptures with the motif "Child and Animal" where children stay, for instance in a playground, at a preschool, a daycare center or in a childrens' hospital. Those sculptures might evoke childrens fantasies and stimulate them to drawing or modelling a favorite animal of their own.

The sculpture can be ordered in any size or in any material, preferably bronze.



OUR NEED OF COMFORT. TERRACOTTA, 21 X 18 X 17 CM.

MARIANNE ARNBÄCK

OUR NEED OF COMFORT

The title "Our Need of Comfort" refers to a posthumously published work by the Swedish author Stig Dagerman.

The sculpture can be ordered in any size and in any material, preferably bronze.



WOMEN AND BIRDS. PROPOSAL FOR PUBLIC ART WORK.

DRAWING: MARIANNE ARNBÄCK

WOMEN AND BIRDS

The womens' hair is blowing in the wind in the same direction as the birds' wings. The women stretch towards the light and the space, as if they were simply going to follow the birds.

If "Women and Birds" are placed in an area with tall buildings they would create a feeling of open space. If they are standing among high trees you get the impression that the birds are going to fly to the tree tops: a wonderful feeling of liberation.

The sculptures can be ordered in any size and in any material, preferably bronze.



HOVERING. OIL ON CANVAS, 138 X 218 CM.
PROPOSAL FOR PUBLIC ART WORK.
MARIANNE ARNBÄCK



WOMAN AND BIRDS. TERRACOTTA, 35 X 25 X 10 CM.
PROPOSAL FOR PUBLIC ART WORK.
MARIANNE ARNBÄCK

WOMAN AND BIRDS

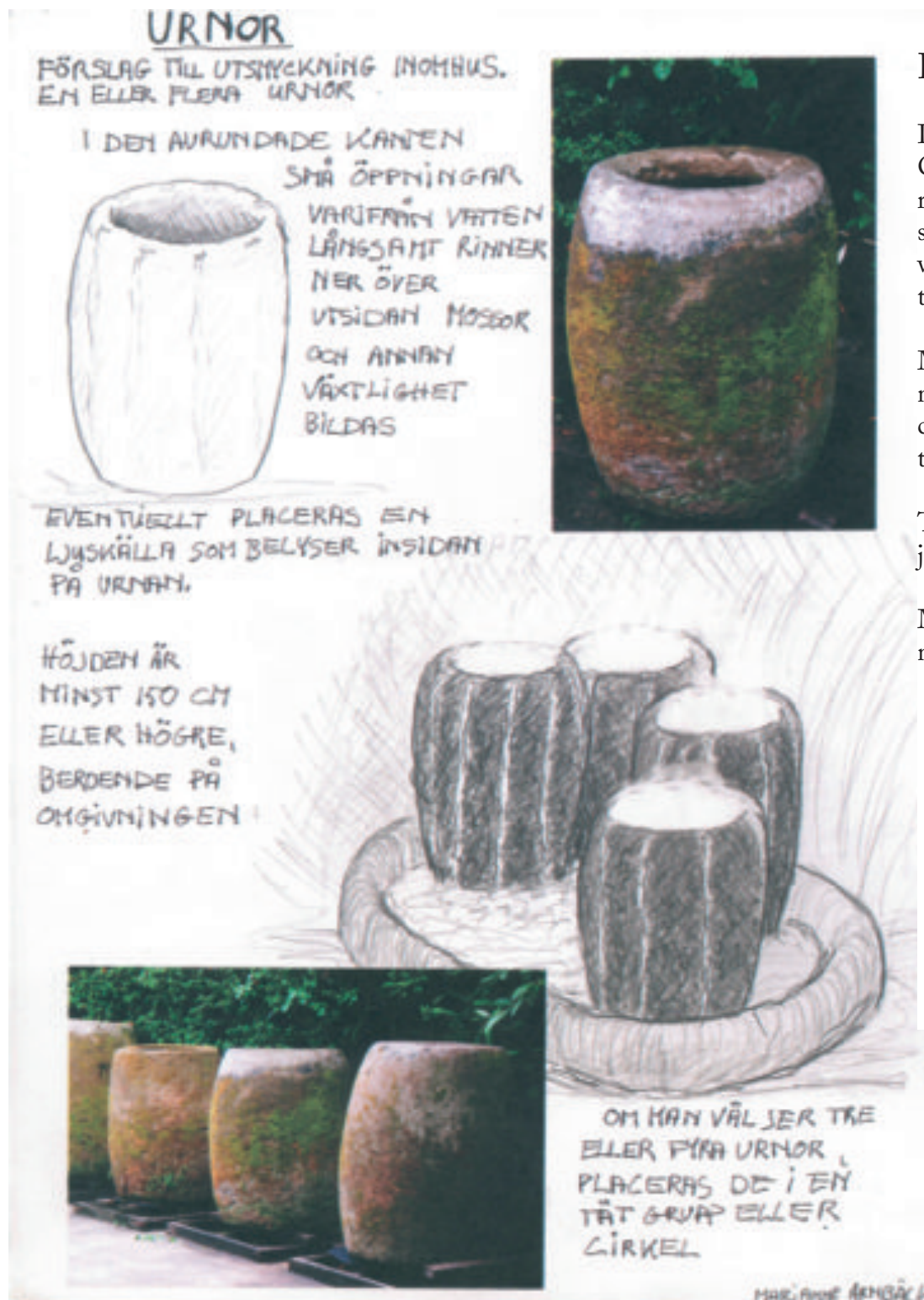
At the entrance of an official building I create a mosaic or hang a tapestry with my painting "Hovering" as a model. In front of the mosaic or tapestry, preferably much larger than my painting, stands "Woman and Birds". The woman is stretching upwards at the same time as the bird takes off to join the birds in the big mosaic/tapestry.

The tapestry must of course be created by a textile artist.



HIDDEN LIGHT I. PROPOSAL FOR PUBLIC ART WORK.

PHOTO/DRAWING: MARIANNE ARNBÄCK



HIDDEN LIGHT I

In a small pond, three jars.
On the outer edge of the
rather large rims are
small openings from
which water slowly
trickles.

Moss and small
moisture-loving plants
cover the outside of
the jars.

The height of the
jars are 150 cm.

Media:
mortar or concrete.

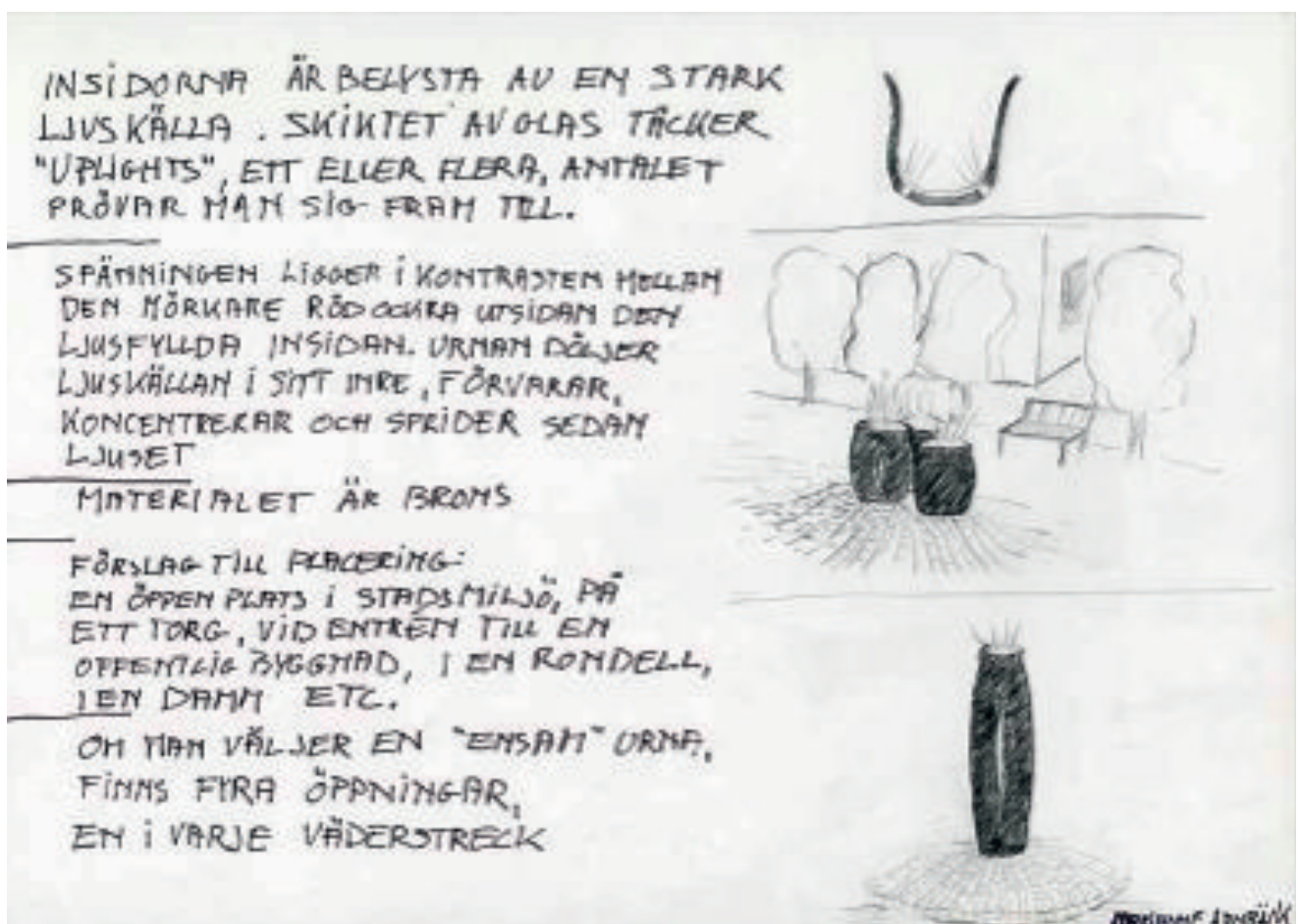
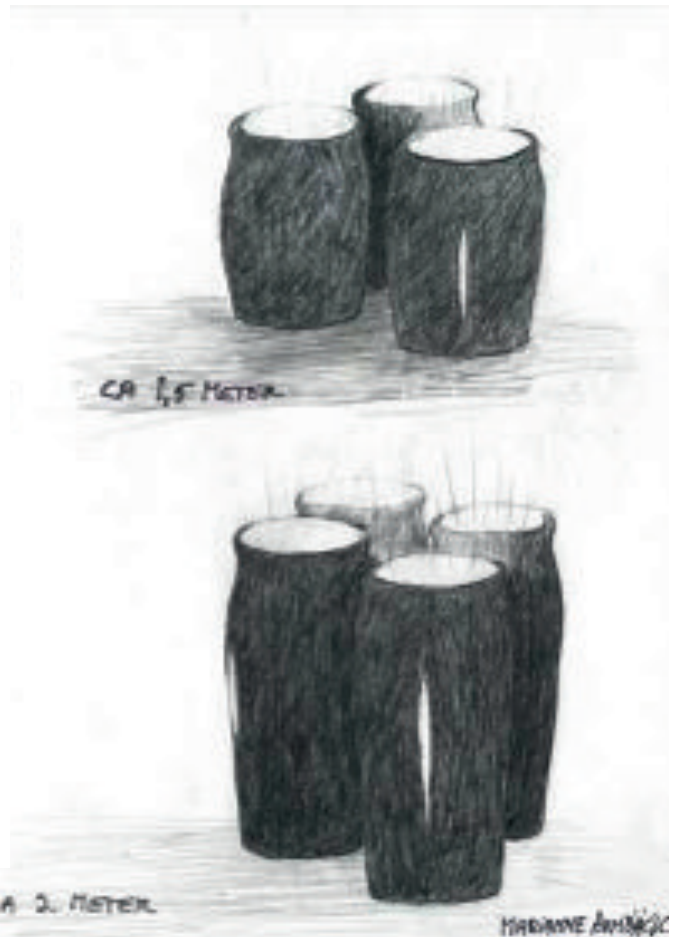
HIDDEN LIGHT II

Three or four bronze jars in a group. Each jar has an elongated opening. These openings, as well as the rim of the jars, are smooth and rounded. The inside and the bottom of the jars are covered by a semitransparent, yellowish white layer of glass. On the bottom, under the glass, uplights are illuminating the inside and shine through the openings.

The jars have a dark red ochre patination which creates a contrast with the bright and shining inside.

If you choose a single jar there must be four openings, each in the direction of a quarter: north, south, east and west.

A good placing of "Hidden Light" would be an open space in a town, in a park, at an entrance of an official building et cetera.



PHILIPPS UNIVERSITÄT ERLANGEN-NÜRNBERG

1. ALABASTER: SEHR ANSEH-
INTERESSANT, BEI GROSSE
LEBENSZEIT ALLEIN
FÄHIG, SICH AN ALABASTER
VON VIELER ANDEREN
UNTERSCHIEDEN.

2. GROSSE CHARAK-
TERISTIK: ER
ALABASTERWANDEN
SIND ER GROSSE
DEN GROSSE
ER.

AR MÖRDA ÖDMÖTAVAR
BOSSORNE I DEN ÅR STÄMME
INTELI REHETEN AV HANDE
DE SPÖTNADAR
SIPPRÄ VATTEN MÖR
LÖFT LÄNGSOMT HAR
LÄMNA MÖRE OCHEN
AV REHETEN. VÄRET
AR OCHSA AV SVART
DUBBEN. FÖRSLAGETS
PLACERATS "UPPLIGTS"
LÄNGS OCHSA AV
VÄTAVATTEN PÅ
HÄRDET. MÖR STENEN
BLIK BEVIST SNETT
UNDER FÖRH

STENEN, VATTNET, LJUSET



SCULPTURE/PHOTO/DRAWING: MARIANNE ARNBÄCK

A black and white photograph of a fossilized handprint. The print is clearly visible against a dark, textured rock matrix. The fingers are spread, and the palm area shows some internal structure. The overall shape is that of a human hand.



HANDENS HEMLIGHET. ALABASTER. 17x13x6 CM MARIANNE ARNÄCK

THE MYSTERY OF THE HAND

Different embodiments:



1. One left hand, 80x60 cm.
2. Four left hands, the whole relief 120x90 cm.



Media:

1. Alabaster or a similar media with such a vivid transparency. In a cold country alabaster must not be placed outside.
2. Black dolerite. The hands are shiny and smooth and the surrounding stone is raw.

If you choose alabaster, the sculpture must be lit from behind in order to show the transparency and the pattern in the stone.



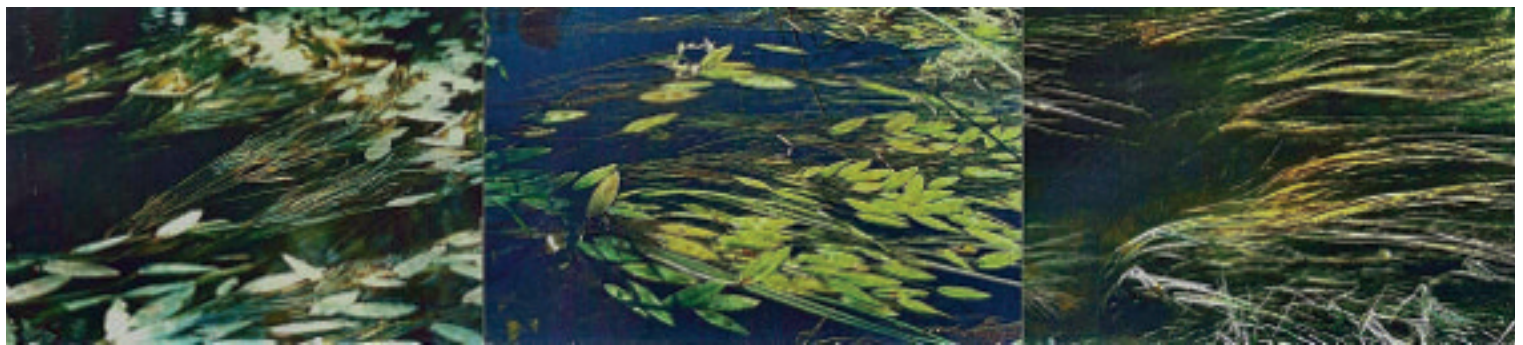
If you choose black dolerite, the hands will be chisled, in contrast to the raw stone. From small holes in the raw stone water seeps into a vat of dolerite.





SOMEWHERE THERE'S A STREAM..... OIL ON CANVAS, 130 X 270 CM. PROPOSAL FOR PUBLIC ART WORK.

MARIANNE ARNBÄCK



SOMEWHERE THERE'S A STREAM..... PROPOSAL FOR PUBLIC ART WORK.

PHOTO: MARIANNE ARNBÄCK

SOMEWHERE THERE'S A STREAM.....

"Somewhere there's a Stream....." is an oil painting and I also made it as a photographic triptych. My idea is to shoot the same stream and then project a film on a several meter long wall in a space where people wait: for example in a waiting room at a hospital, along a crowded corridor or a platform in a tube station.

The green shades create an inner calm. It is fascinating and meditative to watch the water plants' undulating motion. This dampens one's feelings of anxiety and stress.

It is important that the wall is very long in order to give the impression that there is a real stream behind the wall.



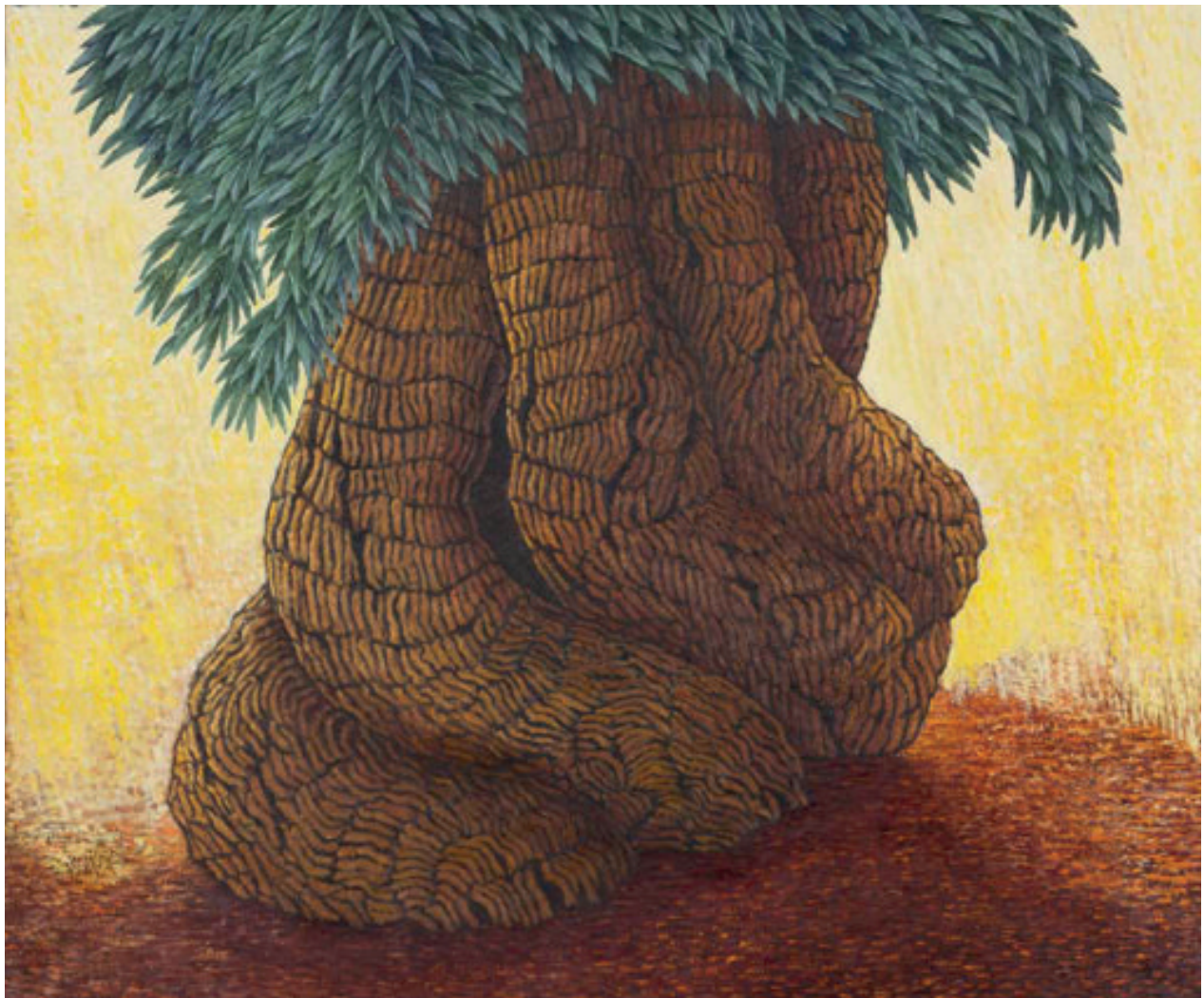
CONNECTION OIL ON CANVAS, 152 X 117 CM.

MARIANNE ARNBÄCK

CONNECTION

With this painting I wish to elicit an urge to dive into the surging greenery and be surrounded by the the green paint shades and of the leaves' diagonal meandering movement. There is security and calm, instead of the vulnerability an open landscape or an elusive horizon can evoke.

My paintings of plants and vegetation can serve as a model for tapestries that of course must be created by a textile artist.



SUN TREE OIL ON CANVAS, 99 X 120 CM.

MARIANNE ARNBÄCK

SUN TREE

The time in history they have been around is enclosed in their essence and gives to the old trees a kind of personality and individual character.
Such a tree is my "Sun Tree".